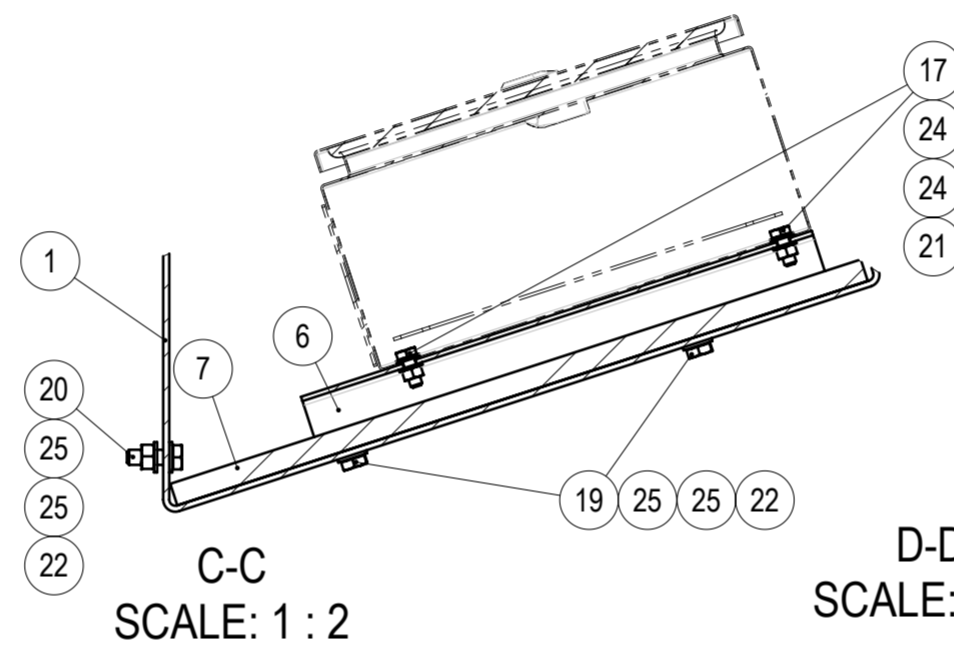
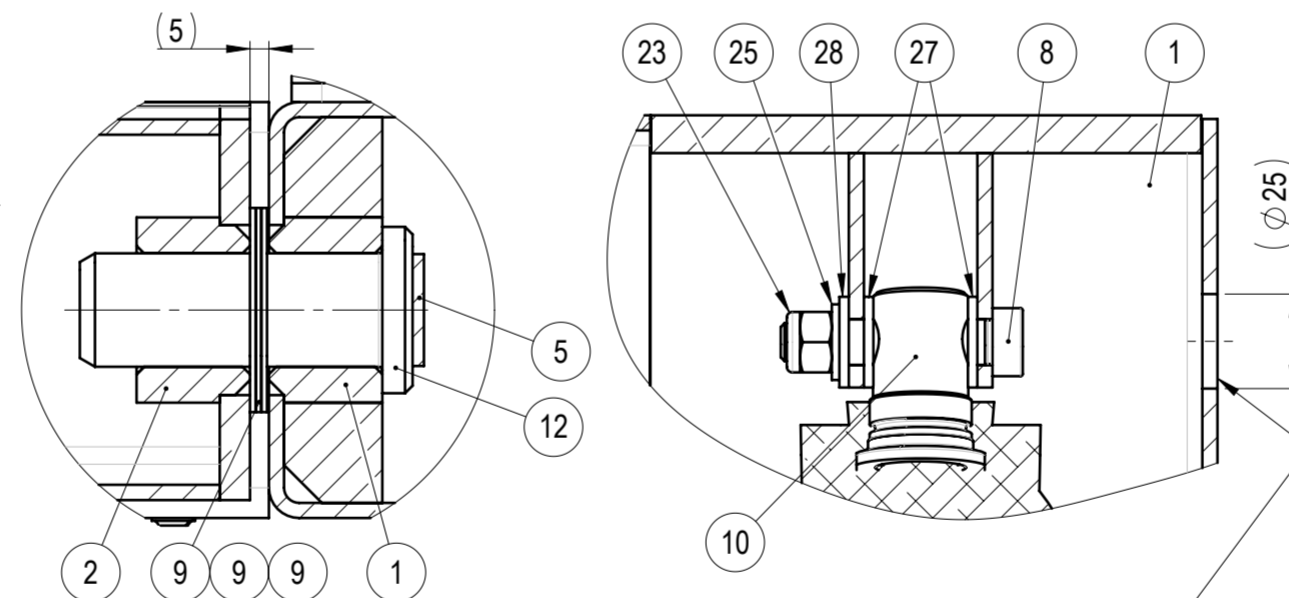


A-A
SCALE: 1 : 5

B
SCALE: 1 : 2

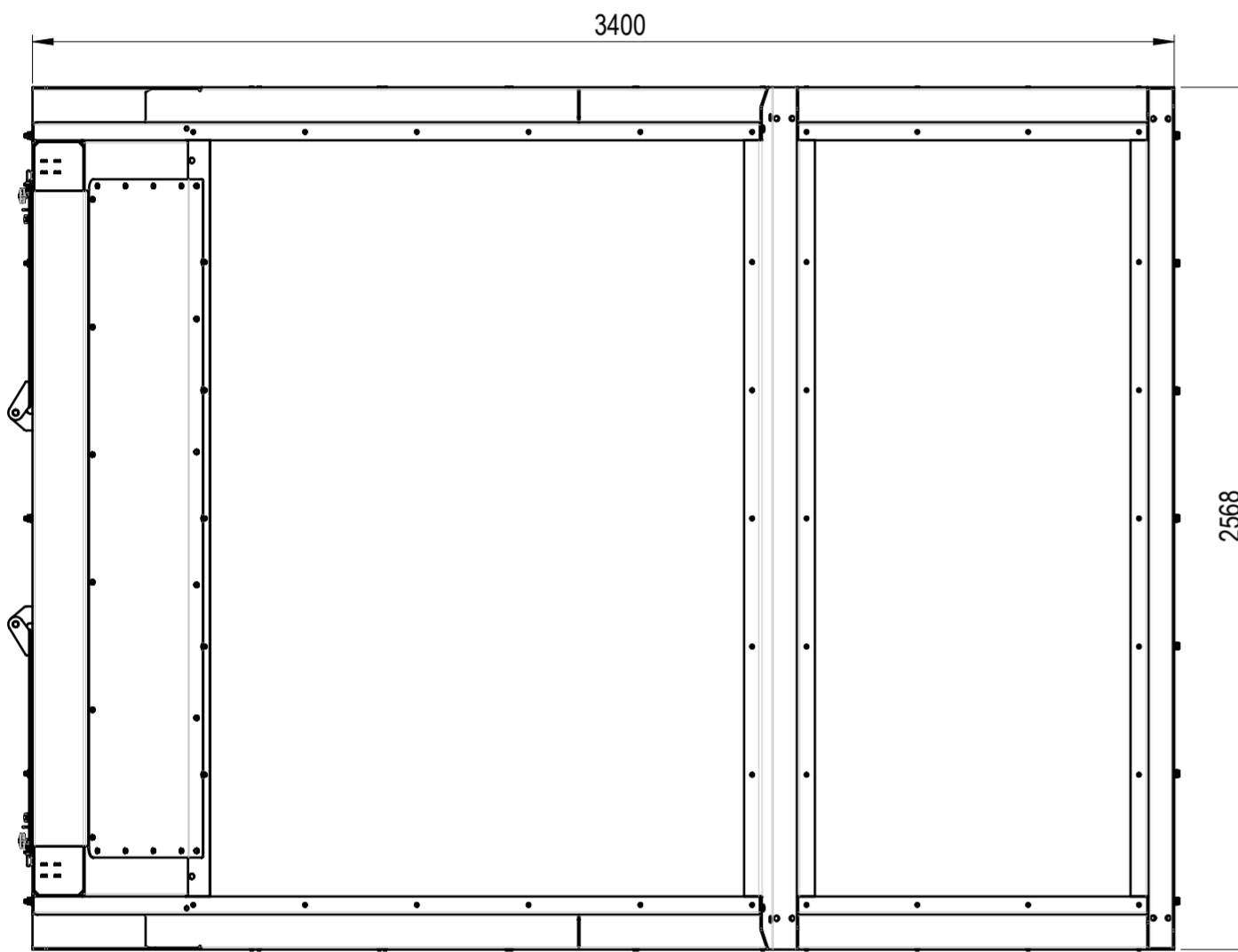
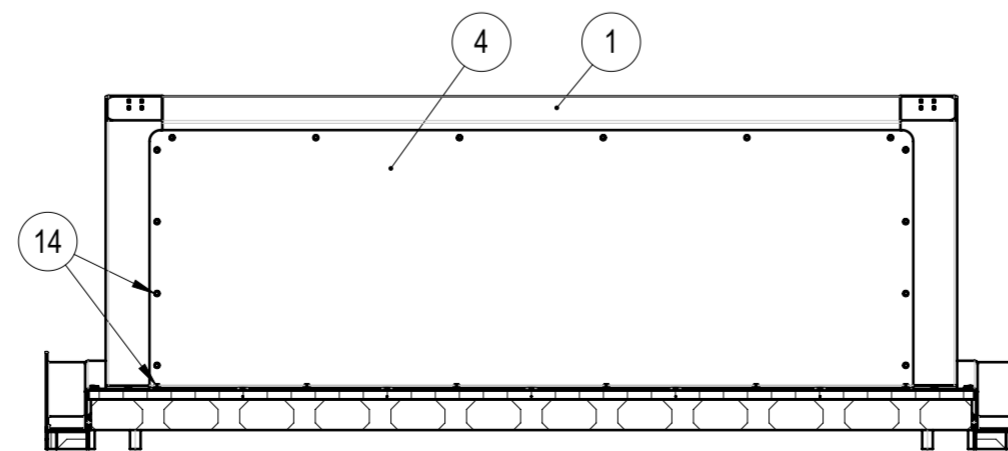


D-D
SCALE: 1 : 2



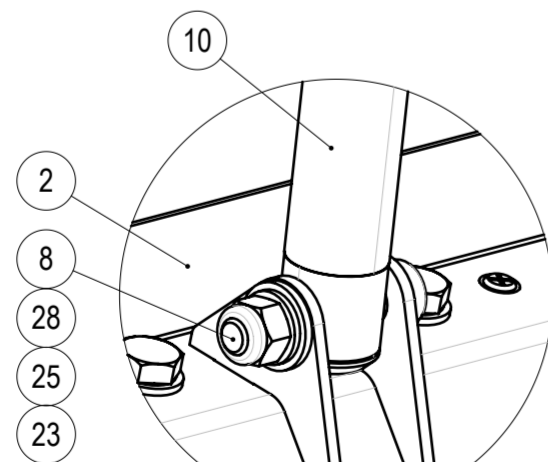
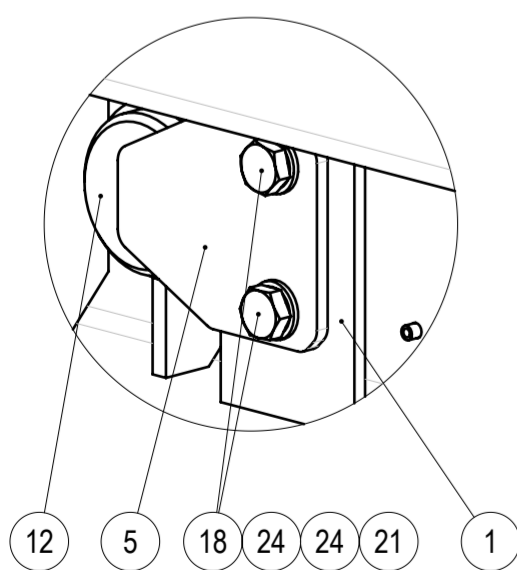
Opening for access to shoulder screw (8) with allen key

G-G
26,02°



F
SCALE: 1 : 2

E
SCALE: 1 : 2



Notes:

1. Apply conservation grease to all Clevis pins and Shoulder bolts.
2. Apply Loctite 243 threadlocker to all metric-threaded fasteners during final assembly.

NO.	PART NO	DESCRIPTION	MATERIAL	PROCESSING	REVISION	WEIGHT	QTY
1	105-07001-00	Main Frame	-	ASY		715.26	1
2	105-07010-00	Door Hatch Assembly	-	ASY		160.17	1
3	105-07011-00	Maintenance hatch assembly	-	ASY		6.34	2
4	105-07000-02	Bent plate	DX51D+Z275	LCB		22.73	1
5	105-07000-03	Plate	S355JR	LC HDG		0.12	2
6	105-07000-04	J-Box bracket	DX51D+Z275	LCB		2.30	2
7	105-07000-05	Rubber insulation	Self-Adhesive Micropore rubber	CND		16.20	1
8	ISO 7379-12-M10-40	Shoulder screw	Black Oxide	COTS		0.06	4
9	PCMW 3254015 E	SKF Thrust Washer	PTFE Composite	COTS		2.21	6
10	363B32_1P500B2000_1	LINAK Actuator LA36 Series	-	COTS		7.80	2
11	Abus 65/40	Brass Padlock	-	COTS		0.15	4
12	ISO 2341 A 30x80	Clevis pin	EZn	COTS		0.53	2
13	Loctite 243	Threadlocking adhesive medium strength 2ml	-	COTS		0.00	1
14	DIN 7504K ST6.3x25	Hex head self-drilling screw	EZn	COTS		0.01	20
15	ISO1234 (DIN94) 3,2 x 25	Split pin	EZn	COTS		0.00	4
16	ISO2341-B 10 x 28	Clevis pin with head	EZn	COTS		0.02	4
17	ISO4017 (DIN933) M8x20	Hex bolt	HDG-8.8	COTS		0.01	8
18	ISO4017 (DIN933) M8x25	Hex bolt	HDG-8.8	COTS		0.02	4
19	ISO4017 (DIN933) M10x25	Hex bolt	HDG-8.8	COTS		0.03	4
20	ISO4017 (DIN933) M10x30	Hex bolt	HDG-8.8	COTS		0.03	14
21	ISO4032 (DIN934) M8	Hex nut	HDG-8	COTS		0.01	12
22	ISO4032 (DIN934) M10	Hex nut	HDG-8	COTS		0.01	18
23	ISO7040 (DIN982) M10	Nylock Hex nut - high	EZn-8	COTS		0.01	4
24	ISO7089 (DIN125) M8	Plain Washer	HDG-HV200	COTS		0.00	24
25	ISO7089 (DIN125) M10	Plain Washer	HDG-HV200	COTS		0.00	40
26	ISO7089 (DIN125) M10	Plain Washer	Nylon	COTS		0.00	8
27	ISO7089 (DIN125) M12	Plain Washer	Nylon	COTS		0.00	4
28	ISO7089 (DIN125) M12	Plain Washer	HDG-HV200	COTS		0.01	4
29	ISO7093 (DIN9021) M10	Large plain washer	EZn-HV200	COTS		0.01	4

WEMPS
ENGINEERING SERVICES

MATERIAL	WEIGHT	DEBURR AND BREAK SHARP EDGES	REVISION	DATE
-	950.947 Kg	DO NOT SCALE DRAWING		10.06.2025
SURFACE PROTECTION	MACHINING	THERMAL CUTTING	WELDING	SCALE
-	ISO 2768 mK	ISO 9013 441	ISO 13920 BF	1:20
NAME	SIGNATURE	PART NO.	FORMAT	
Designed by D. Dislers		105-07000-00	A2	
Drawn by E. Kriviss		DESCRIPTION	SHEET 1/1	
Technical ref.		Ventilation hatch		